

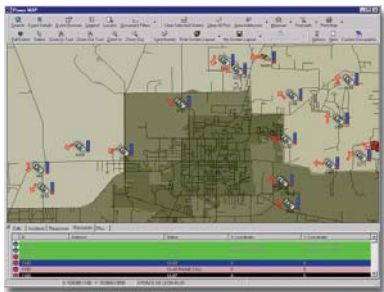


# Power MAP

## Product Highlights

Designed specifically for public safety, every aspect of Power MAP focuses on facilitating emergency response.

With Power MAP, you are in total control. From a single point of configuration, you define the on-screen layout of the individual maps, set the icons and labels for different emergency events, configure all aspects of GIS data, and much more – saved to each individual login.



- Automatic display of landline, Phase I and Phase II calls, incidents, responses and resources
- Enhanced Wireless E911 support via different search and display method for any number of provider-plus-class-of-service combinations
- Works with any NENA compliant controller
- Use GIS data layers regardless of their coordinate system
- Call control and dispatching from the map
- Automatic updates of call location when repeat ALI requests return new information
- Powerful search interface
- Live display of address and X,Y of cursor location
- Concurrent multiple map displays
- Distance measurement
- Area addresses
- Find near
- Find path
- Locator map
- Discrepancy tracking

© 2004 Positron Public Safety Systems  
Power MAP is a registered trademark of Positron Public Safety Systems.  
The names of actual companies and products mentioned herein may be the trademarks of their respective owners.  
R040520-A